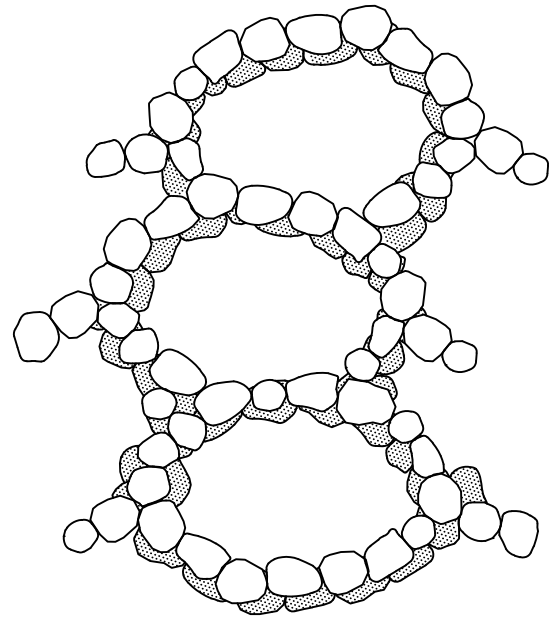


APPENDIX C: EXISTING CONDITIONS & PROPOSED CONCEPTUAL DESIGNS

- Figure 1. Sites 6-8 Existing
- Figure 2. Sheet Reference
- Figure 3. Site 9 Existing
- Figure 4. Site 10 Existing
- Figure 5. Sites 4-6 Existing
- Figure 6. Sites 1-3 Existing
- Figure 7. Sites 6-8 Proposed
- Figure 8. Site 9 Proposed
- Figure 9. Site 10 Proposed
- Figure 10. Sites 4-6 Proposed
- Figure 11. Sites 1-3 Proposed
- Figure 12. Rain garden sizing concept table



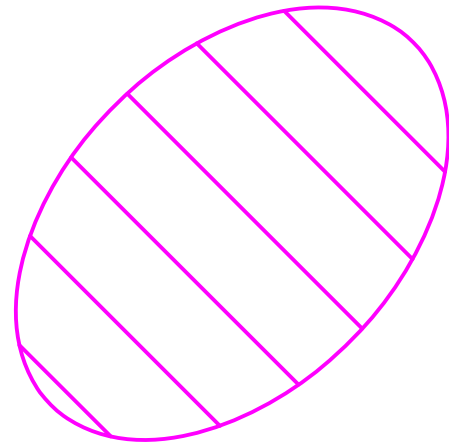
FILE PATH: "S:\0 Special Projects\Maine Coastal Program\Task 2- Case Studies\Study 1 - Bustins Island\DRAWINGS\Bustins Civil Set.dwg"



Step Pool Structure

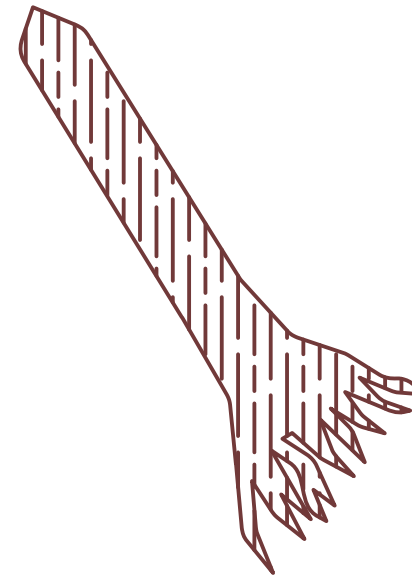
See Section '10.1 Structures' for details

Note: Symbols in details are yellow



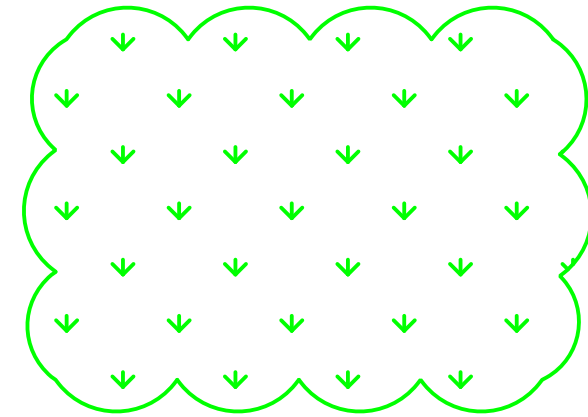
Rain Garden Structure

See Section '10.1 Structures' for details



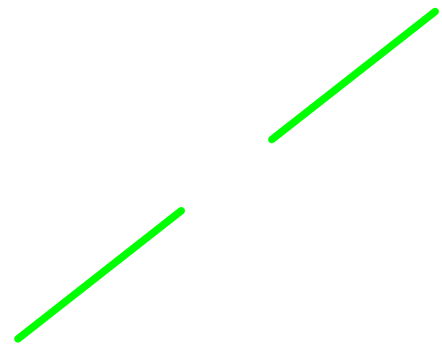
Rootwad Structure

See Section '10.1 Structures' for details



Native Plantings

See Section '10.1 Structures' for details



Rubber Razor Structure

See Section '10.1 Structures' for details

Disclaimers:

The details provided in this set of plans are not to be used for construction purposes.



35 MAIN ST, SUITE 3 WINDHAM, ME 04062

PROJECT NAME: Bustins Island Bluff Case Study

LOCATION: Freeport, Maine

INITIALS	DATE	DESCRIPTION
	5/2/17	Draft

DRAWN BY: Adam Sellick

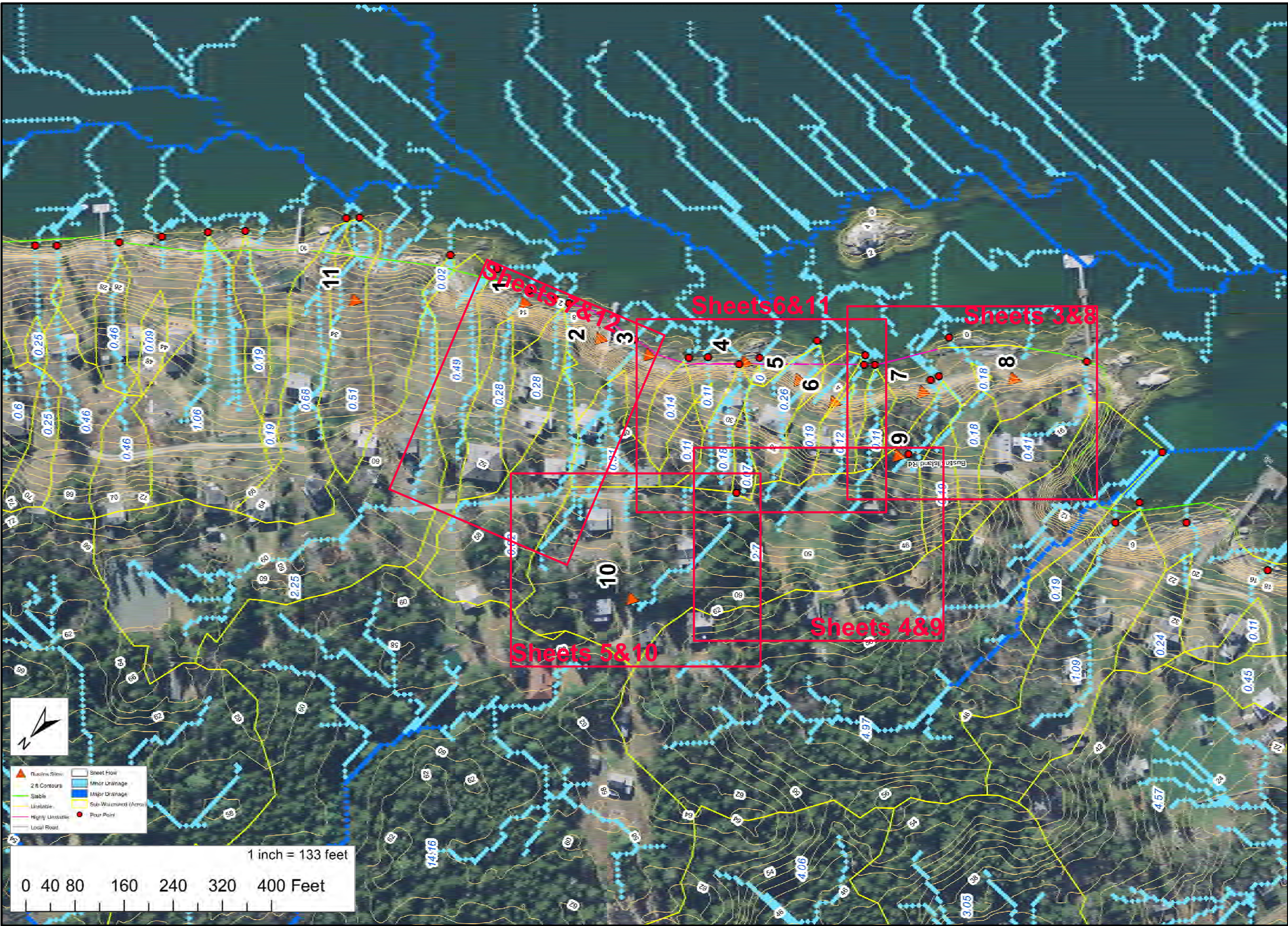
CHECKED BY: Troy Barry

REVIEWED BY: Robyn Saunders

SHEET TITLE

Legend and Disclaimers

FILE PATH: "S:\0 Special Projects\Maine Coastal Program\Task 2- Case Studies\Study 1 - Bustins Island\DRAWINGS\Bustins Civil Set.dwg"




Cumberland County Soil & Water Conservation District

35 MAIN ST, SUITE 3 WINDHAM, ME 04062

PROJECT NAME: Bustins Island Bluff Case Study

LOCATION: Freeport, Maine

NOT FOR CONSTRUCTION USE

INITIALS	DATE	DESCRIPTION
	5/2/17	Draft

DRAWN BY: Adam Sellick

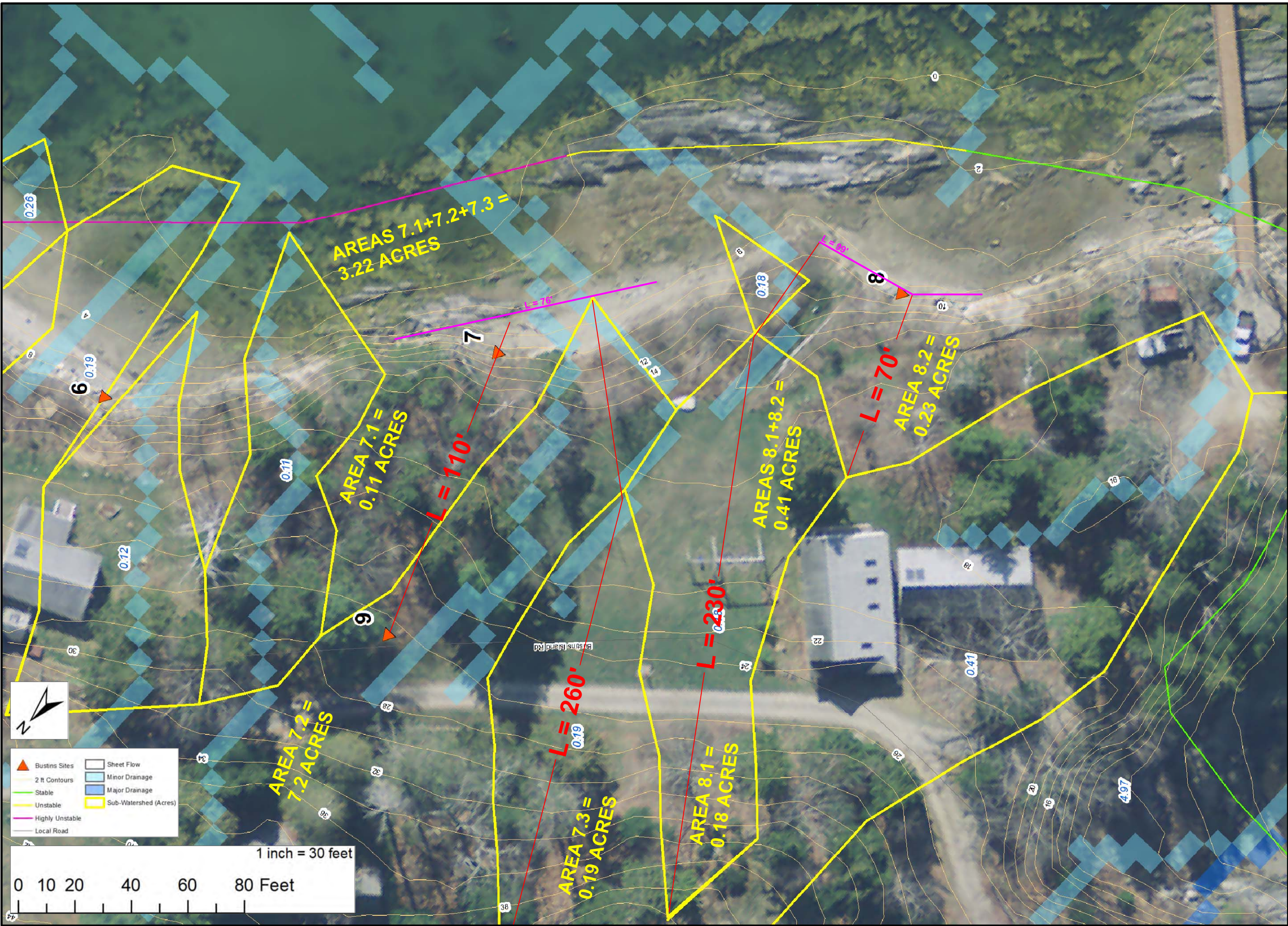
CHECKED BY: Troy Barry

REVIEWED BY: Robyn Saunders

SHEET TITLE

Sheet Reference

FILE PATH: "S:\0 Special Projects\Maine Coastal Program\Task 2- Case Studies\Study 1 - Bustins Island\DRAWINGS\Bustins Civil Set.dwg"




Cumberland County Soil & Water Conservation District
 35 MAIN ST, SUITE 3 WINDHAM, ME 04062
 PROJECT NAME: Bustins Island Bluff Case Study
 LOCATION: Freeport, Maine


NOT FOR CONSTRUCTION USE

INITIALS	DATE	DESCRIPTION
	5/2/17	Draft

DRAWN BY: Adam Sellick
 CHECKED BY: Troy Barry
 REVIEWED BY: Robyn Saunders
SHEET TITLE
Sites 6-8 Existing
 Figure 1
 SHEET 3 OF 12

FILE PATH: "S:\0 Special Projects\Maine Coastal Program\Task 2- Case Studies\Study 1 - Bustins Island\DRAWINGS\Bustins Civil Set.dwg"





 Cumberland County Soil & Water Conservation District

 35 MAIN ST, SUITE 3 WINDHAM, ME 04062

 PROJECT NAME: Bustins Island Bluff Case Study

 LOCATION: Freeport, Maine

NOT FOR CONSTRUCTION USE

INITIALS	DATE	DESCRIPTION
	5/2/17	Draft

DRAWN BY: Adam Sellick

 CHECKED BY: Troy Barry

 REVIEWED BY: Robyn Saunders

SHEET TITLE

Site 9 Existing

 Figure 2

 SHEET 4 OF 12

FILE PATH: "S:\0 Special Projects\Maine Coastal Program\Task 2- Case Studies\Study 1 - Bustins Island\DRAWINGS\Bustins Civil Set.dwg"




Cumberland County Soil & Water Conservation District

35 MAIN ST, SUITE 3 WINDHAM, ME 04062

PROJECT NAME: Bustins Island Bluff Case Study

LOCATION: Freeport, Maine

NOT FOR CONSTRUCTION USE

INITIALS	DATE	DESCRIPTION
	5/2/17	Draft

DRAWN BY: Adam Sellick

CHECKED BY: Troy Barry

REVIEWED BY: Robyn Saunders

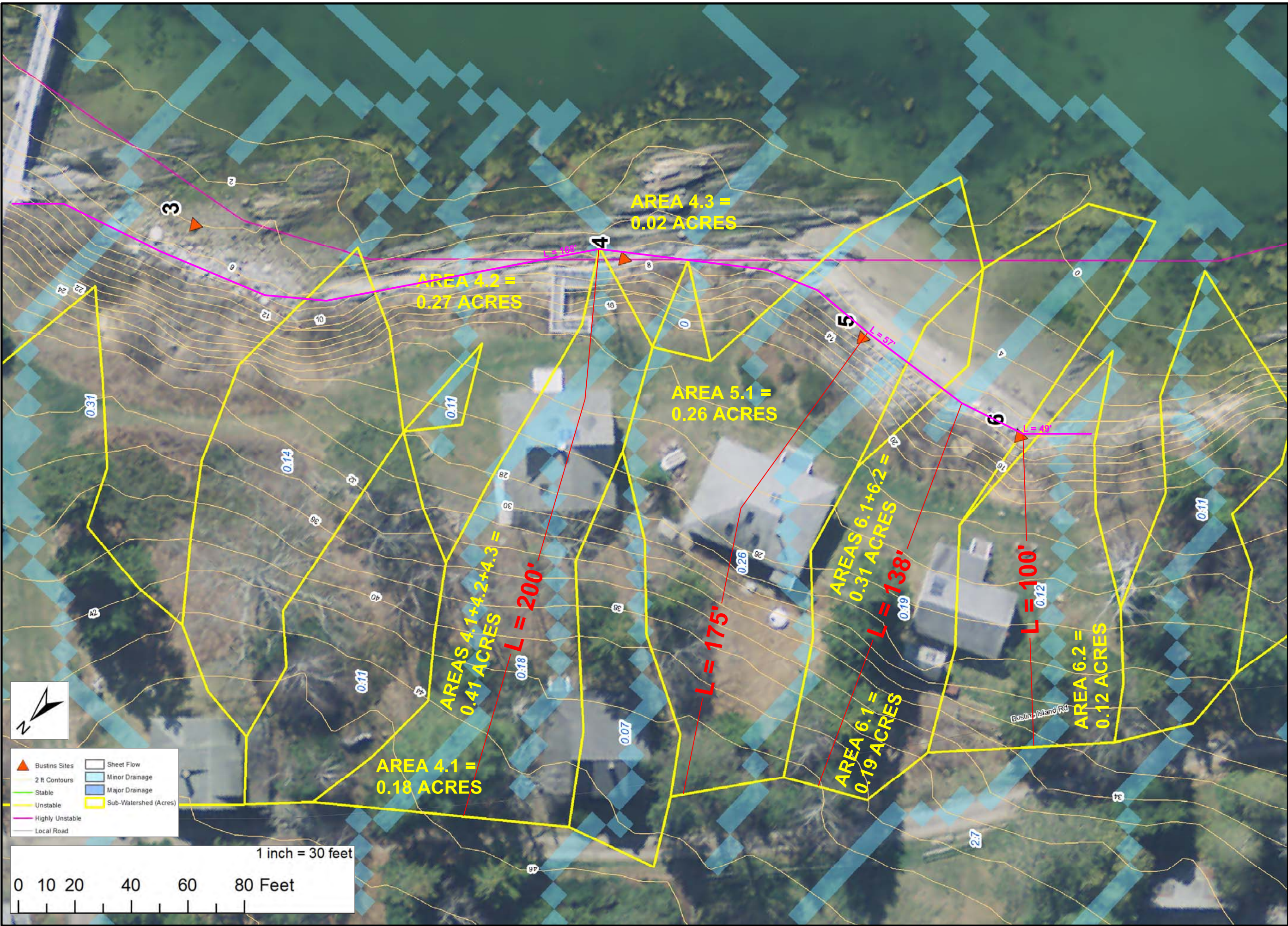
SHEET TITLE

Site 10 Existing

Figure 3

SHEET 5 OF 12

FILE PATH: "S:\0 Special Projects\Maine Coastal Program\Task 2- Case Studies\Study 1 - Bustins Island\DRAWINGS\Bustins Civil Set.dwg"



NOT FOR CONSTRUCTION USE

INITIALS	DATE	DESCRIPTION
	5/2/17	Draft

DRAWN BY: Adam Sellick

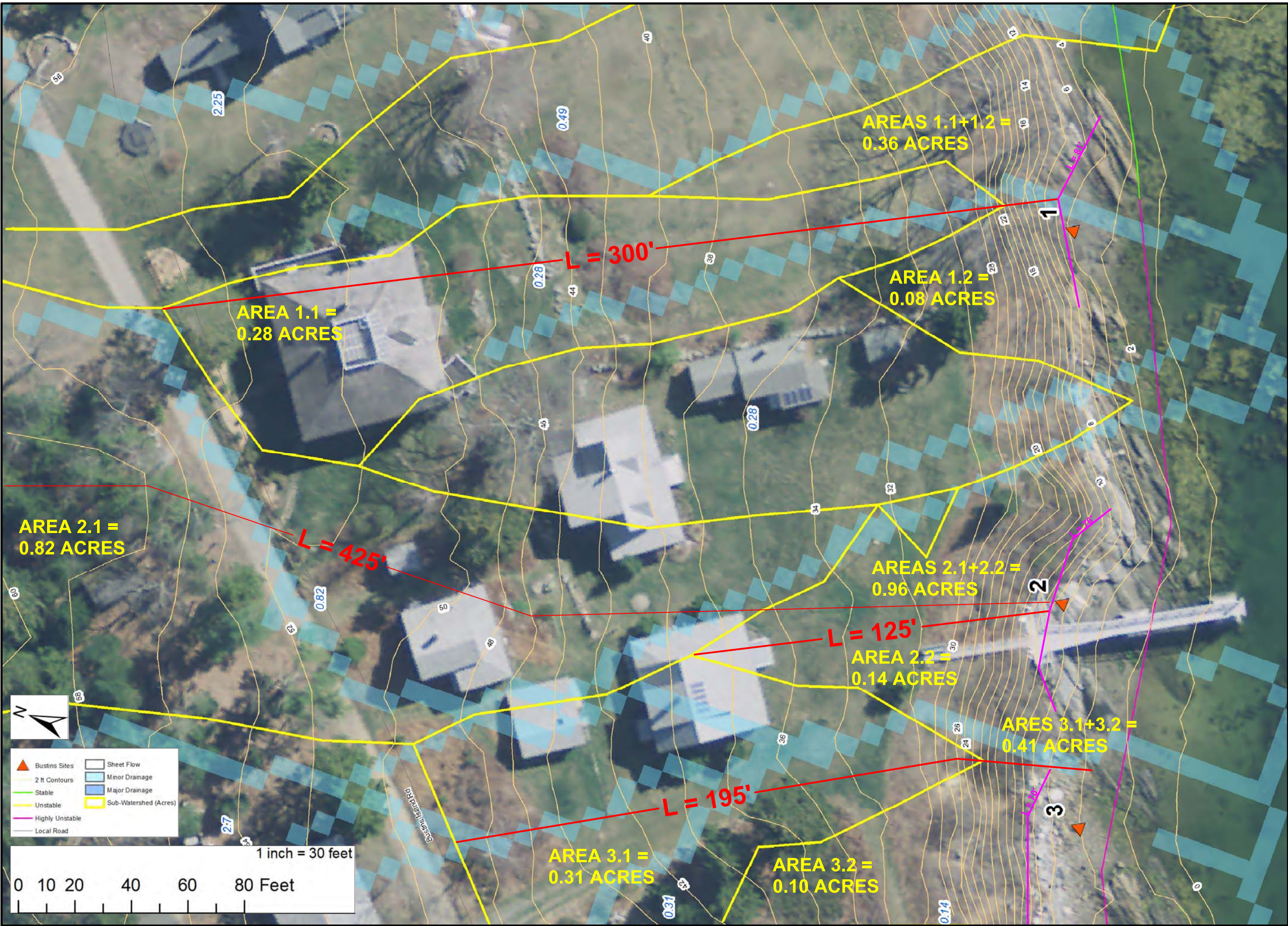
 CHECKED BY: Troy Barry

 REVIEWED BY: Robyn Saunders

SHEET TITLE

 Sites 4-6 Existing

FILE PATH: "S:\0 Special Projects\Maine Coastal Program\Task 2- Case Studies\Study 1 - Bustins Island\DRAWINGS\Bustins Civil Set.dwg"



35 MAIN ST, SUITE 3 WINDHAM, ME 04062

PROJECT NAME: Bustins Island Bluff Case Study

LOCATION: Freeport, Maine

NOT FOR CONSTRUCTION USE

INITIALS	DATE	DESCRIPTION
	5/2/17	Draft

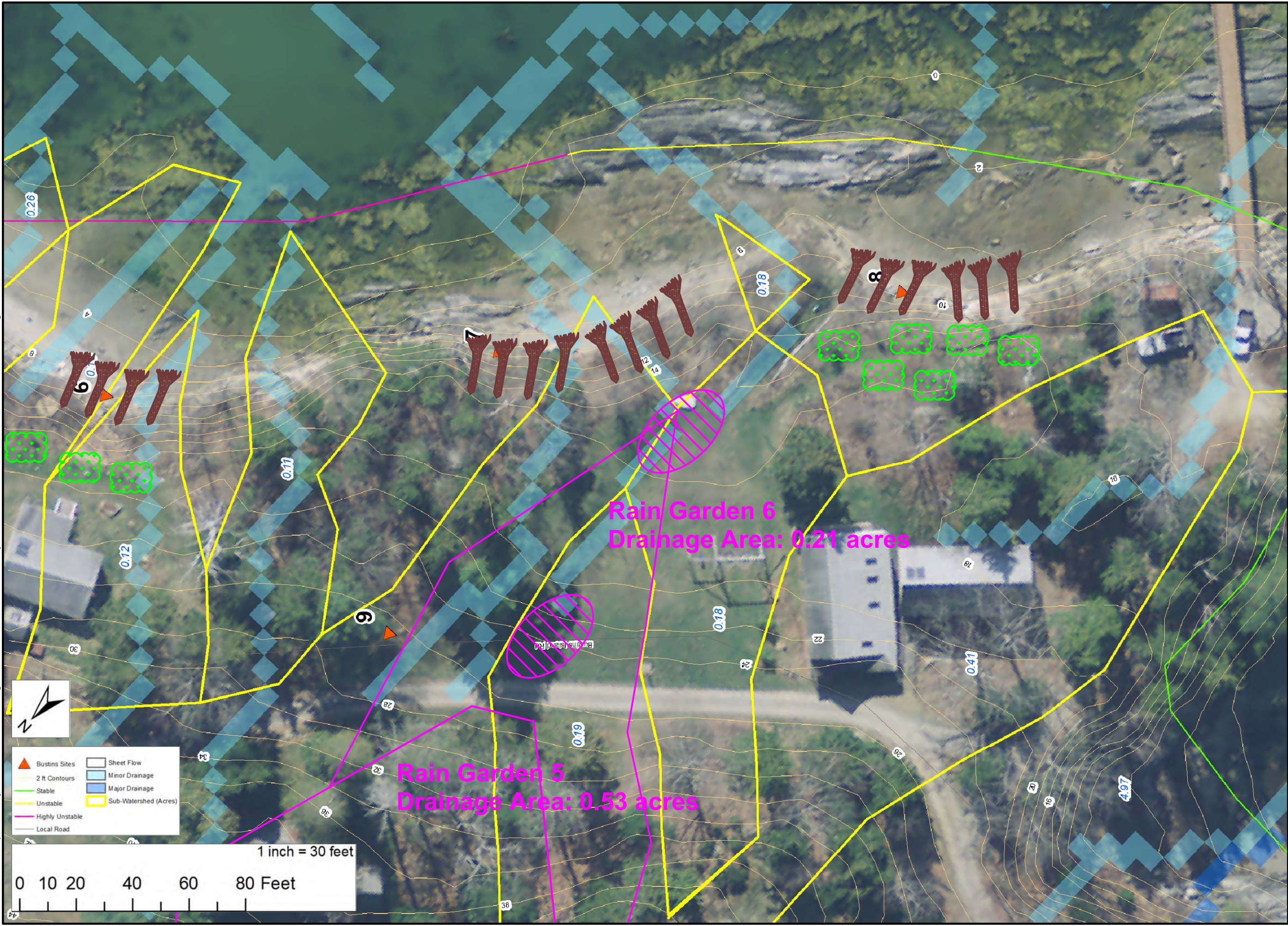
DRAWN BY: Adam Sellick

CHECKED BY: Troy Barry

REVIEWED BY: Robyn Saunders

SHEET TITLE
Sites 1-3 Existing

FILE PATH: "S:\0 Special Projects\Maine Coastal Program\Task 2- Case Studies\Study 1 - Bustins Island\DRAWINGS\Bustins Civil Set.dwg"





 Cumberland County Soil & Water Conservation District

 35 MAIN ST, SUITE 3 WINDHAM, ME 04062

 PROJECT NAME: Bustins Island Bluff Case Study

 LOCATION: Freeport, Maine

NOT FOR CONSTRUCTION USE

INITIALS	DATE	DESCRIPTION
	5/2/17	Draft

DRAWN BY: Adam Sellick

 CHECKED BY: Troy Barry

 REVIEWED BY: Robyn Saunders

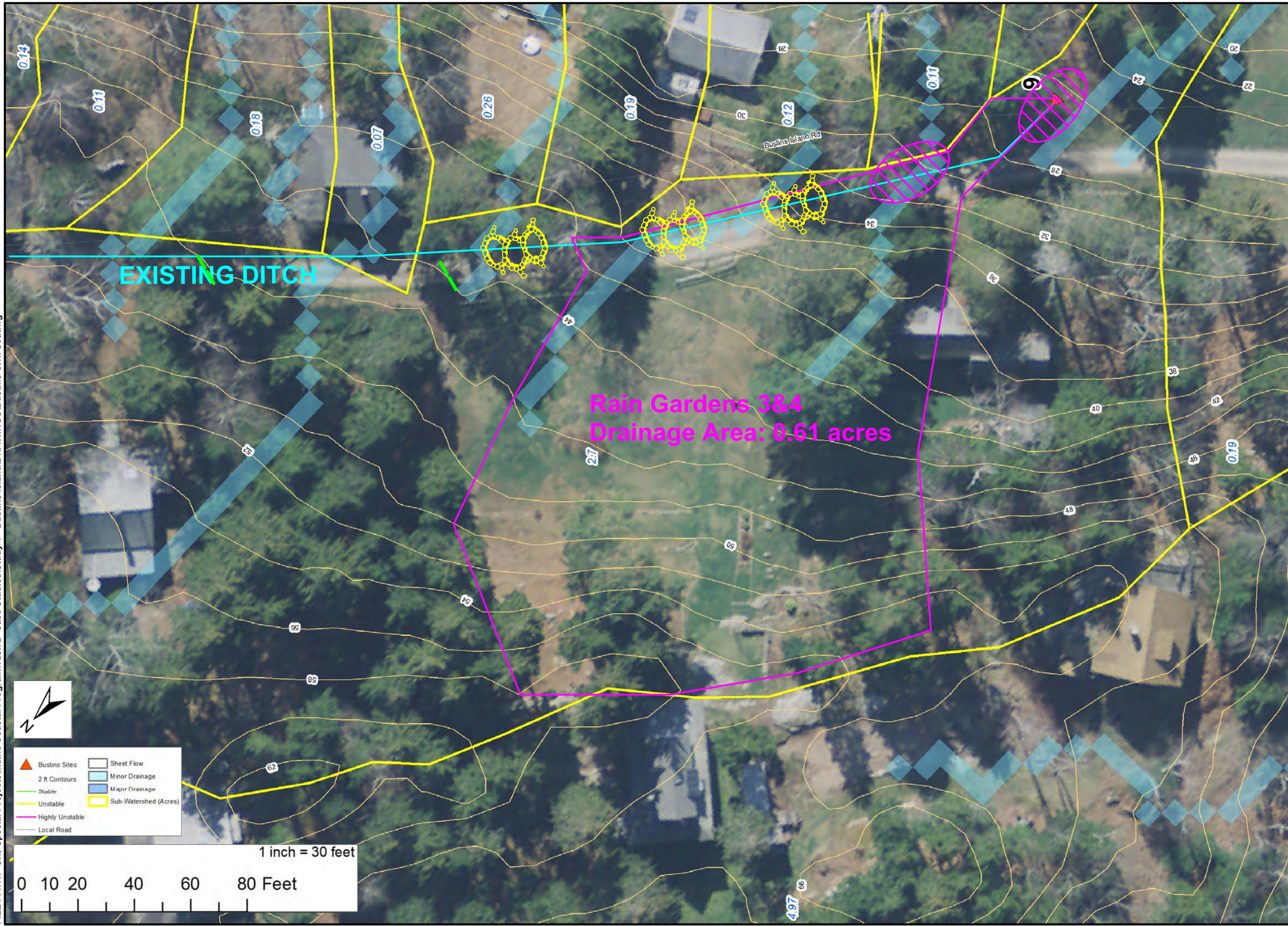
SHEET TITLE

Sites 7-9 Proposed

 Figure 6

 SHEET 8 OF 12

FILE PATH: "S:\0 Special Projects\Maine Coastal Program\Task 2- Case Studies\Study 1 - Bustins Island\DRAWINGS\Bustins Civil Set.dwg"



Legend:

- Bustins Sites (Red triangle)
- 2 ft Contours (Yellow line)
- Stable (Green line)
- Unstable (Yellow line)
- Highly Unstable (Magenta line)
- Local Road (Grey line)
- Sheet Flow (White box)
- Minor Drainage (Light blue box)
- Major Drainage (Dark blue box)
- Sub-Watershed (Acres) (Yellow box)

Cumberland County Soil & Water Conservation District
 35 MAIN ST., SUITE 3 WINDHAM, ME 04062
 PROJECT NAME: Bustins Island Bluff Case Study
 LOCATION: Freeport, Maine

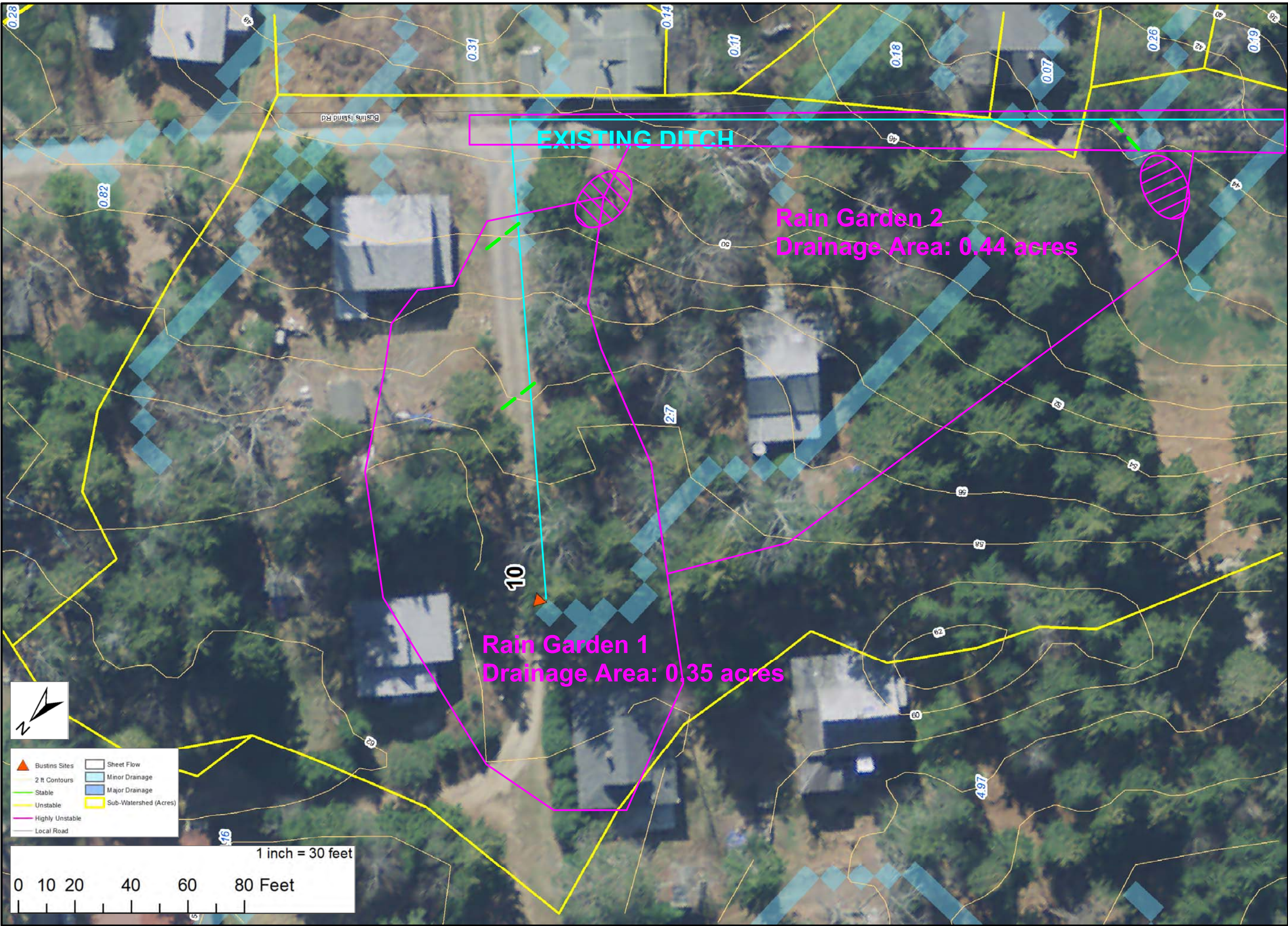
NOT FOR CONSTRUCTION USE

INITIALS	DATE	DESCRIPTION
	5/2/17	Draft

DRAWN BY: Adam Sellick
 CHECKED BY: Troy Barry
 REVIEWED BY: Robyn Saunders

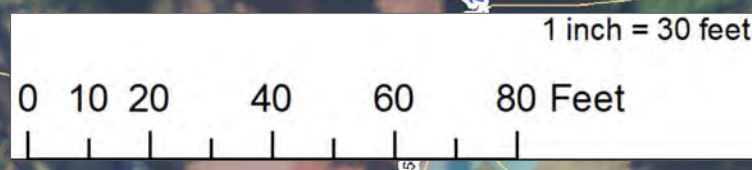
SHEET TITLE
Site 9 Proposed

FILE PATH: "S:\0 Special Projects\Maine Coastal Program\Task 2- Case Studies\Study 1 - Bustins Island\DRAWINGS\Bustins Civil Set.dwg"



Legend

- Bustins Sites (Orange triangle)
- 2 ft Contours (Yellow line)
- Stable (Green line)
- Unstable (Yellow line)
- Highly Unstable (Pink line)
- Local Road (Grey line)
- Sheet Flow (White box)
- Minor Drainage (Light blue box)
- Major Drainage (Dark blue box)
- Sub-Watershed (Acres) (Yellow box)



Cumberland County Soil & Water Conservation District

35 MAIN ST, SUITE 3 WINDHAM, ME 04062

PROJECT NAME: Bustins Island Bluff Case Study

LOCATION: Freeport, Maine

NOT FOR CONSTRUCTION USE

INITIALS	DATE	DESCRIPTION
	5/2/17	Draft

DRAWN BY: Adam Sellick

CHECKED BY: Troy Barry

REVIEWED BY: Robyn Saunders

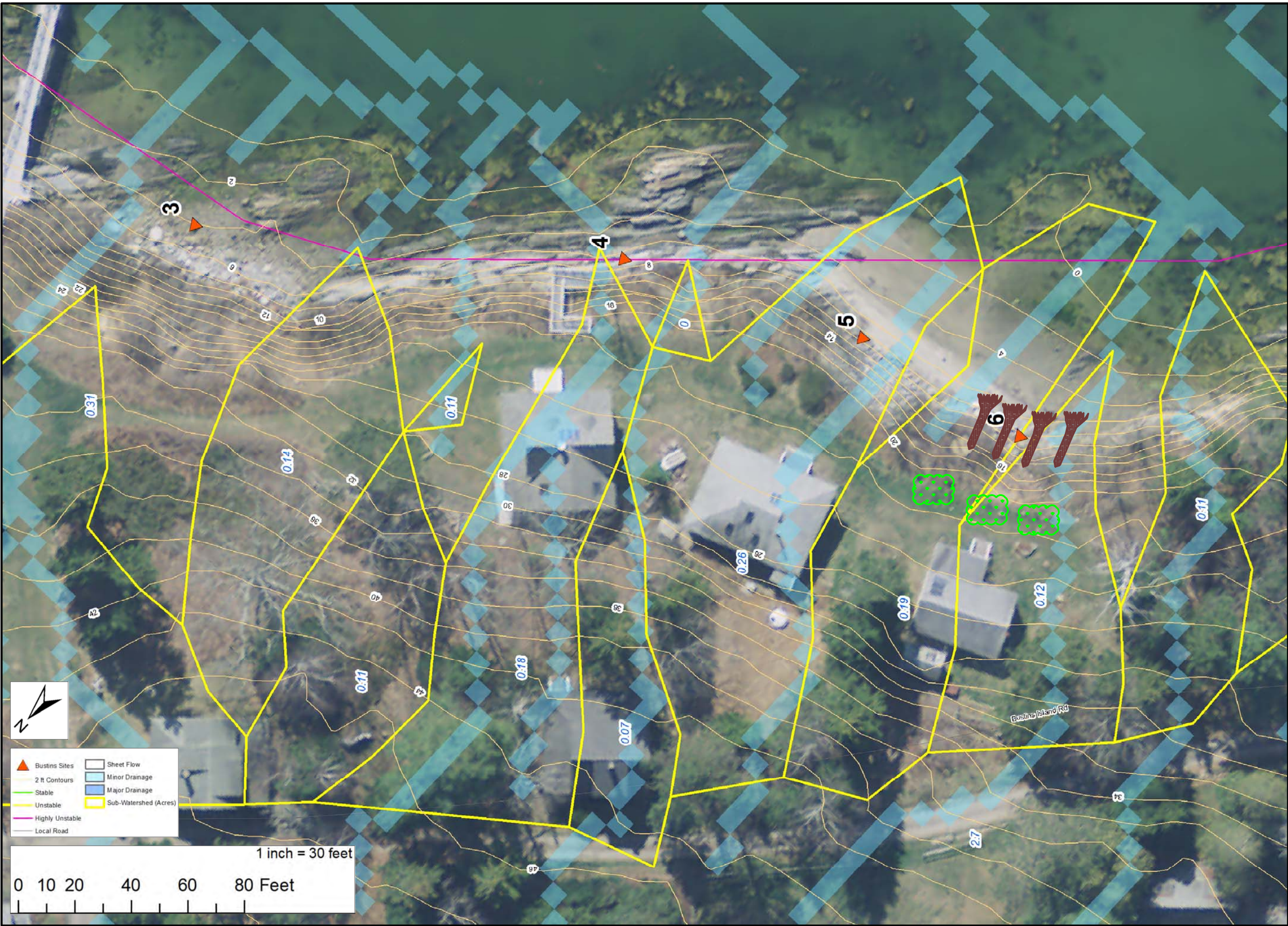
SHEET TITLE

Site 10 Proposed

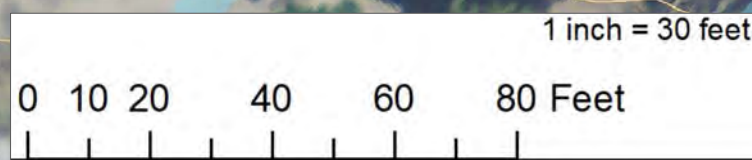
Figure 8

SHEET 10 OF 12

FILE PATH: "S:\0 Special Projects\Maine Coastal Program\Task 2- Case Studies\Study 1 - Bustins Island\DRAWINGS\Bustins Civil Set.dwg"



- ▲ Bustins Sites
- 2 ft Contours
- Stable
- Unstable
- Highly Unstable
- Local Road
- Sheet Flow
- Minor Drainage
- Major Drainage
- Sub-Watershed (Acres)




Cumberland County Soil & Water Conservation District

35 MAIN ST, SUITE 3 WINDHAM, ME 04062

PROJECT NAME: Bustins Island Bluff Case Study

LOCATION: Freeport, Maine

**NOT FOR
CONSTRUCTION
USE**

INITIALS	DATE	DESCRIPTION
	5/2/17	Draft

DRAWN BY: Adam Sellick

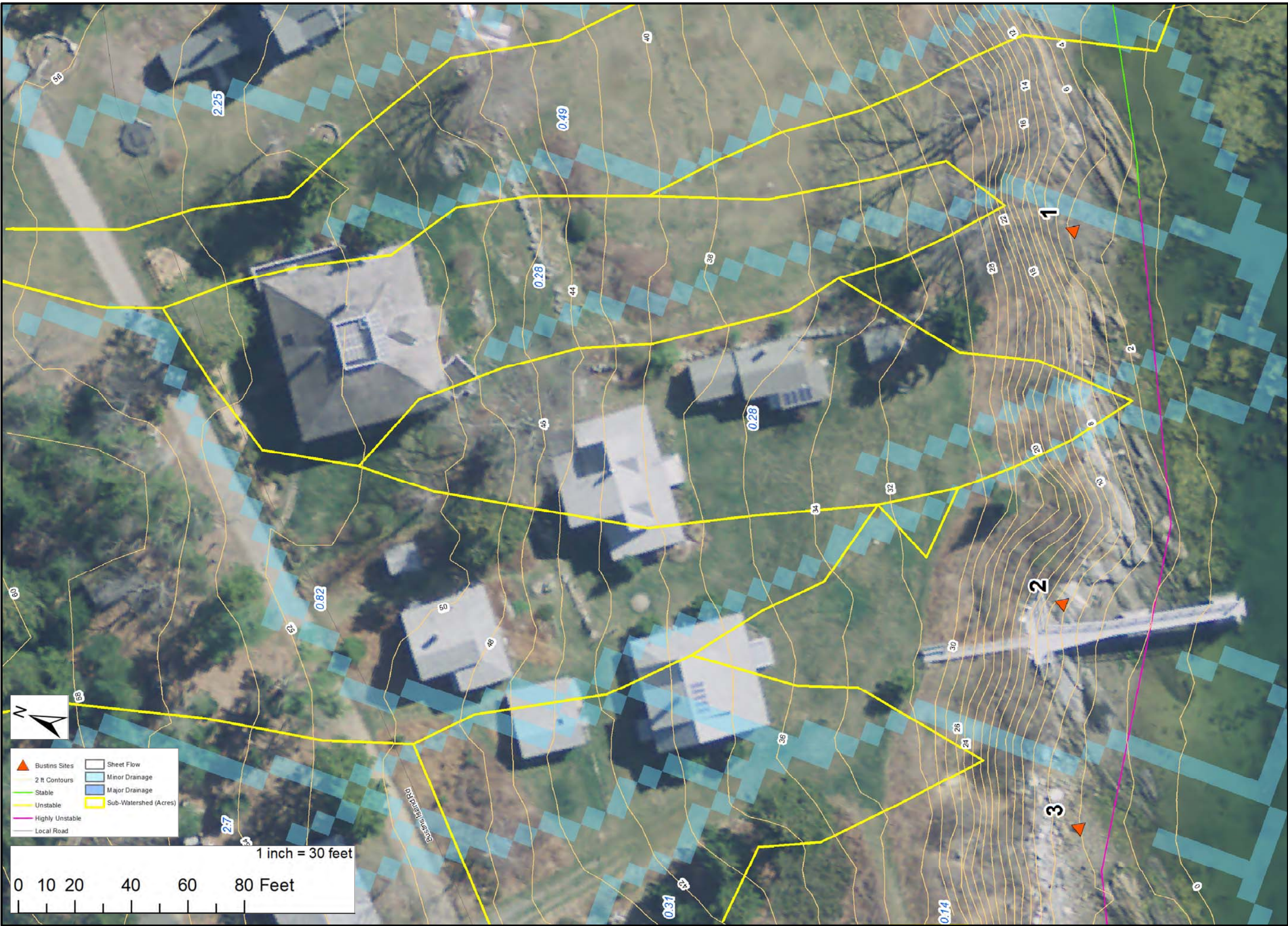
CHECKED BY: Troy Barry

REVIEWED BY: Robyn Saunders

SHEET TITLE

Sites 4-6 Proposed

FILE PATH: "S:\0 Special Projects\Maine Coastal Program\Task 2- Case Studies\Study 1 - Bustins Island\DRAWINGS\Bustins Civil Set.dwg"



35 MAIN ST, SUITE 3 WINDHAM, ME 04062

PROJECT NAME: Bustins Island Bluff Case Study

LOCATION: Freeport, Maine

NOT FOR CONSTRUCTION USE

No conceptual designs at this time

INITIALS	DATE	DESCRIPTION
	5/2/17	Draft

DRAWN BY: Adam Sellick

CHECKED BY: Troy Barry

REVIEWED BY: Robyn Saunders

SHEET TITLE
Sites 1-3 Proposed

Figure 10
SHEET 12 OF 12